



# Cola<sup>®</sup>Teric CBS

## Sultaine Amphoteric Co-Surfactant

<b>INCI NAME</b>	Cocamidopropyl Hydroxysultaine
<b>CAS NUMBER</b>	68139-30-0
<b>LISTINGS</b>	EU (REACH); Canada (DSL); US (TSCA); Australia (AICS); China (IECSC/IECIC); Philippines (PICCS); New Zealand (NZIOC); Taiwan (TCSI)

**Cola<sup>®</sup>Teric CBS** is a sultaine amphoteric surfactant. Cola<sup>®</sup>Teric CBS exhibits outstanding surface activity, wetting, foaming, and compatibility in a wide variety of applications. Due to its amphoteric nature, Cola<sup>®</sup>Teric CBS is compatible with cationic, anionic, and nonionic surfactants. The compatibility and stability of formulations containing Cola<sup>®</sup>Teric CBS are maintained over a broad pH range.

In industrial applications, Cola<sup>®</sup>Teric CBS is compatible and stable in systems containing acids, alkali, electrolytes and detergent builders. Cola<sup>®</sup>Teric CBS has excellent lime soap dispersing properties. Cola<sup>®</sup>Teric CBS is a mild detergent that will help stabilize foam and build viscosity.

### COLA<sup>®</sup>TERIC SULTAINES ARE "GREENER"

More natural raw materials are used in the manufacture of Cola<sup>®</sup>Teric cocamidopropyl hydroxysultaine than other leading brands. For formulators interested in making their product more eco-friendly, Cola<sup>®</sup>Teric sultaines offer greener and more sustainable characteristics.

**Cola<sup>®</sup>Teric CBS is rated as 76% biobased.**

### BENEFITS

- High foaming amphoteric surfactant derived from coconut oil
- Preservative-free
- Mild on the skin and eyes
- High electrolyte tolerance
- Excellent foaming over broad pH ranges
- Greatly improves the foam quality of formulated systems
- Compatible with all surfactant classes

Cola<sup>®</sup>Teric CBS is Readily Biodegradable (OECD 301D; 28 days)

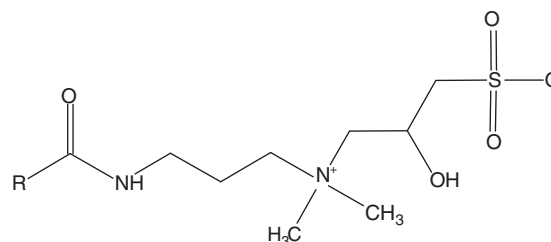
### APPLICATIONS

- 2 in 1 Shampoos, Bar Soap, Bath Gels, Body Washes
- Facial Cleansers
- Ethnic Products
- Liquid Hand Soaps, Towelettes
- Metal Cleaners, Paint Strippers
- All-Purpose Heavy Duty Industrial Cleaner
- Foam Boosters
- Transportation Washes

*Typical Use Level: 1 – 10%*

### TYPICAL PROPERTIES / STRUCTURE

Appearance	Clear Yellow Liquid
Ionic Character	Amphoteric
Solids, %	48.0 – 50.0
NaCl, %	7
pH (10% as is in deionized water)	7.5 – 8.5
Color, Gardner '98	2
% Glycerin	2.6

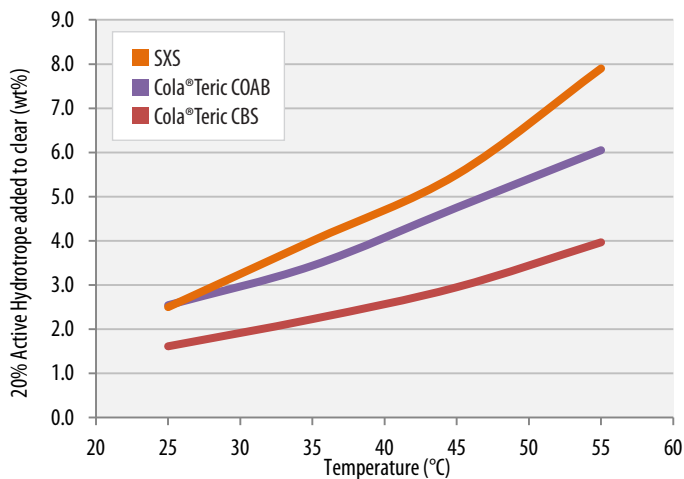


R - from Coco

### WETTING AND FOAM PERFORMANCE

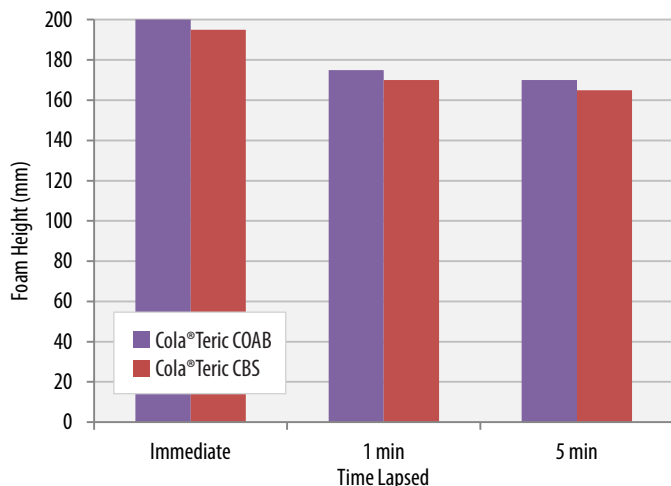
Draves Wetting, 1% active, sec	25.4		
Ross-Miles	Immediate	1 min	5 min
1% active, tap water	190	175	170
1%, 2% NaCl water	195	175	165

## HYDROTROPE PERFORMANCE TEST



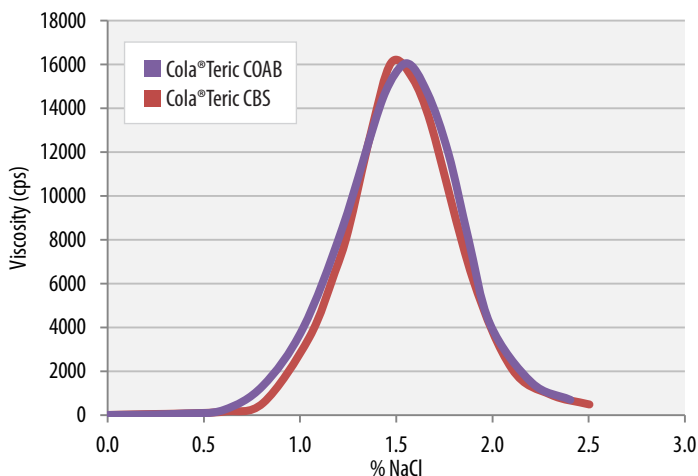
20% Active Cola®Teric Comparisons • Solution: 1% Surfonic L12-6 in 10% KOH

## FOAM PERFORMANCE TEST



Test Solution: Water, SLS, SLES-2, Amphoteric  
COAB: 75/10/10/5; CBS: 76.4/10/10/3.7

## SALT PERFORMANCE TEST



Test Solution: Water, SLS, SLES-2, Amphoteric + Cola®Liquid DC (all) 1.5  
COAB: 75/10/10/5; CBS: 74.8/10/10/3.7

## FORMULATION *Foaming Facial Cream*

INGREDIENT	%
1 Water	qs to 100.00
2 <b>Suga®Nate 160NC</b>	30.00
3 <b>Cola®Teric CBS</b>	15.00
4 <b>Cola®Lipid SAFL</b>	1.50
5 Glycol Distearate	2.50
6 <b>Cola®Mate SS-40</b>	7.00
7 Pureact® MS	5.00
8 Fragrance (White Lily)	0.10
9 Kathon® CG	0.07

### Procedure:

- Combine ingredients 1-4. Heat to 65-70°C.
- Add 5-7 and allow to melt completely. Once homogeneous, slowly cool below 50°C.
- Add 8, 9. Adjust pH with citric acid as needed.

### Typical Properties:

Appearance: Clear pH: 6.0 Viscosity: 12000 cps

Readily biodegradable per OECD 301 methods. This product meets the criteria for a surfactant under the EU Detergents Regulation (EC) 648/2004.

## STORAGE / HANDLING

Cola®Teric CBS should be stored in closed containers. Frozen material may be thawed in a warm room, venting drums while warming. Shipped in 55 gallon poly drums (net weight 500 lb/226.7 kg). Typical shelf life is 24 months from date of manufacture. Safety Data Sheets may be found at [www.colonialchem.com](http://www.colonialchem.com).

## ADDITIONAL LISTINGS



DfE (CleanGredients)  
Whole Foods Premium Body Care  
USDA Biopreferred Product



## Colonial Chemical

225 Colonial Drive • South Pittsburg, TN 37380  
Phone: 423-837-8800 • Fax: 423-837-3888  
[www.colonialchem.com](http://www.colonialchem.com)

*Innovative Specialty Surfactants*