



Cola[®]Teric LHS

Fatty Alkyl Sultaine Amphoteric

INCI Lauryl Hydroxysultaine
CAS 72869-77-3
LISTINGS Canada (NDSL); US (TSCA); China (IECSC/IECIC); Philippines (PICCS)

Cola[®]Teric LHS is a fatty alkyl amphoteric surfactant in the sultaine class. Cola[®]Teric LHS is a high foaming, biodegradable surfactant that is compatible with virtually all other surfactants. It demonstrates excellent stability in both extreme acid and alkaline formulations and very stable in both acid and alkali formulations and can be solubilized at 2-3% in 30-40% caustic soda solutions. Cola[®]Teric LHS is a unique foaming surfactant successfully used in sulfate-free and PEG-free formulations in industrial, household and hair & body care applications.

BENEFITS

- Offers mildness in combination with anionic surfactants and soaps
- Clear solutions with excellent foaming and wetting characteristics can be obtained.
- Combined effects of increased foam and stability with alkyl sulfates, alkyl ether sulfates, alkyl-benzene sulfonates and soaps
- Viscosity builder when formulated with anionic surfactants for liquid soaps and shampoos
- Outstanding performance in high concentrations of mineral acids
- Glycerin-Free
- **Greenest** of the sultaines offered

Readily Biodegradable (OECD 301D; 28 days)

Cola[®]Teric LHS is "Derived Natural" with a Natural Origin Index of 0.87 in accordance with ISO 16128 guideline.



Cola[®]Teric LHS is rated as 87% biobased.

APPLICATIONS

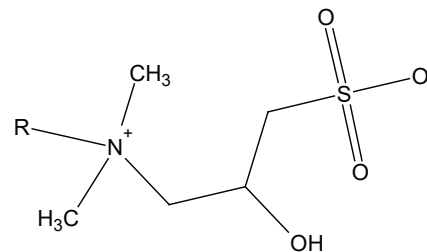
- Shampoos
- Liquid Soaps
- Acid Cleaners
- Metal cleaning
- Bottle washing concentrates
- Heavy duty steam cleaning
- Wax stripping
- Wetting agent in the acid pickling of metals and as a detergent in acid cleaners with scale and lime soap dispersing properties

Typical Use Level: 1 – 10%

TYPICAL PROPERTIES

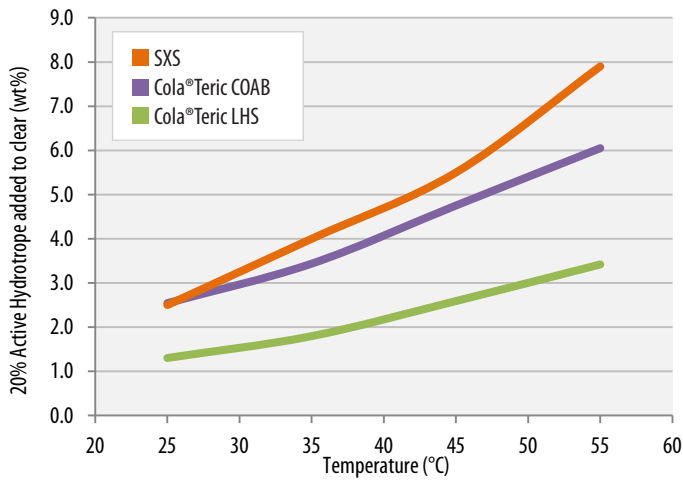
Appearance	Clear Liquid
Ionic Character	Amphoteric
Solids, %	49.0 – 51.0
NaCl, %	7.0 – 8.0
pH (as is)	6.5 – 8.5
pH (5% aqueous)	7.0 – 8.0
Color, Gardner '98	3 Max.

STRUCTURE



R - Lauryl

HYDROTROPE PERFORMANCE TEST



20% Active Cola®Teric Comparisons • Solution: 1% Surfonic L12-6 in 10% KOH

95% RCI Foaming Face Wash Formulation

INGREDIENT	%
1 Water	qs to 100.00
2 Suga®Nate 160NC	15.00
3 Cola®Teric LHS	9.00
4 Poly Suga®Glycinate C	3.00
5 Glycerine	4.00
6 Cola®Trove CA	1.00
6 Euxyl PE9010	0.70
7 White Lily Fragrance	0.10

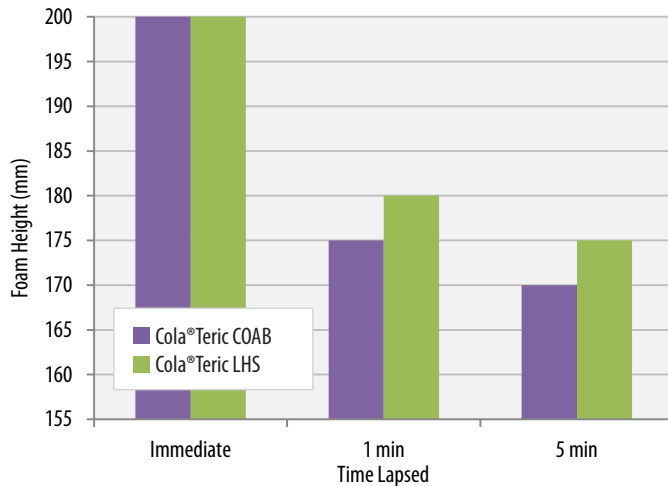
Procedure:

Combine ingredients 1-2. Heat to 45°C. Add remaining ingredients.

Typical Properties:

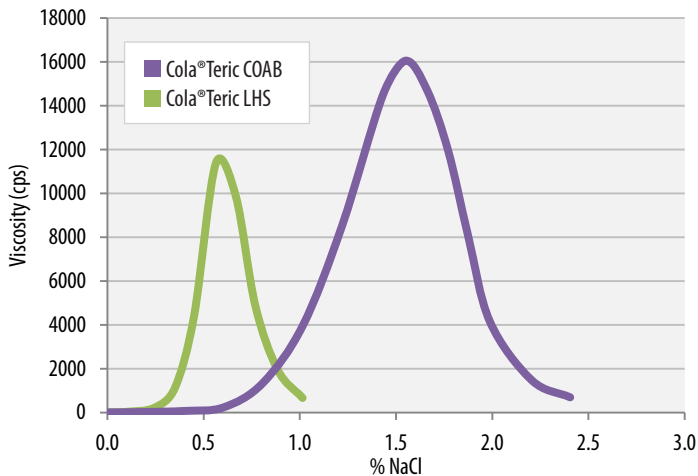
Appearance: Clear pH: 6.0 Viscosity: 20 cP

FOAM PERFORMANCE TEST



Test Solution: Water, SLS, SLES-2, Amphoteric
COAB: 75/10/10/5; LHS: 76.4/10/10/3.7

SALT PERFORMANCE TEST



Test Solution: Water, SLS, SLES-2, Amphoteric + Cola®Liquid DC (all) 1.5
COAB: 75/10/10/5; LHS: 74.9/10/10/3.7

STORAGE / HANDLING

Cola®Teric LHS should be stored in closed containers. Frozen material may be thawed in a warm room, venting drums while warming. Shipped in 55 gallon poly drums (net weight 480 lb/217 kg). Typical shelf life is 12 months from date of manufacture. Safety Data Sheets may be found at www.colonialchem.com.



Colonial Chemical

Innovative Specialty Surfactants

www.colonialchem.com