



Cola®Teric CBS (ME)

Sultaine Amphoteric Co-Surfactant

INCI Cocamidopropyl Hydroxysultaine

Cola®Teric CBS (ME) is a sultaine amphoteric surfactant. Cola®Teric CBS (ME) exhibits outstanding surface activity, wetting, foaming, and compatibility in a wide variety of applications. Due to its amphoteric nature, Cola®Teric CBS (ME) is compatible with cationic, anionic, and nonionic surfactants. The compatibility and stability of formulations containing Cola®Teric CBS (ME) are maintained over a broad pH range.

In industrial applications, Cola®Teric CBS (ME) is compatible and stable in systems containing acids, alkali, electrolytes and detergent builders. Cola®Teric CBS (ME) has excellent lime soap dispersing properties. Cola®Teric CBS (ME) is a mild detergent that will help stabilize foam and build viscosity.

COLA®TERIC SULTAINES ARE "GREENER"

More natural raw materials are used in the manufacture of Cola®Teric cocamidopropyl hydroxysultaine than other leading brands. For formulators interested in making their product more eco-friendly, Cola®Teric sultaines offer greener and more sustainable characteristics.

BENEFITS

- High foaming amphoteric surfactant derived from coconut oil
- Preservative-free
- Mild on the skin and eyes
- High electrolyte tolerance
- Excellent foaming over broad pH ranges
- Greatly improves the foam quality of formulated systems
- Compatible with all surfactant classes

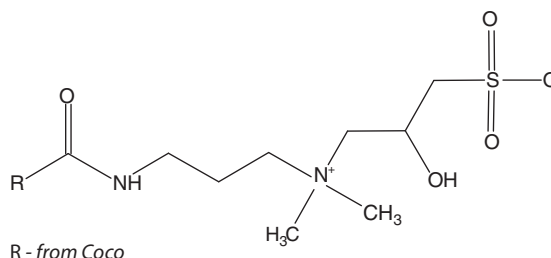
APPLICATIONS

- 2 in 1 Shampoos, Bar Soap, Bath Gels, Body Washes
- Facial Cleansers
- Ethnic Products
- Liquid Hand Soaps, Towelettes
- Metal Cleaners, Paint Strippers
- All-Purpose Heavy Duty Industrial Cleaner
- Foam Boosters
- Transportation Washes

Typical Use Level: 1 – 10%

TYPICAL PROPERTIES

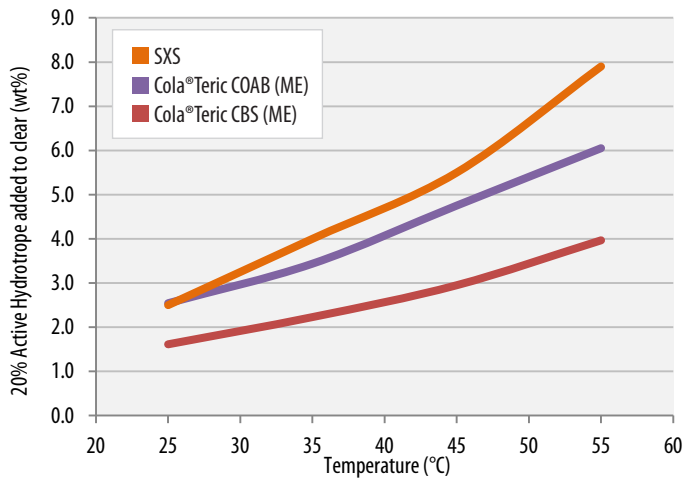
Appearance @ 25°C	Clear Liquid
Ionic Character	Amphoteric
Solids, %	48.0 – 50.0
NaCl, %	7.0 Max.
pH (10% aqueous)	7.0 – 8.5
Color, Gardner '98	3 Max.
Color, Gardner BYK	3.5 Max.
% Glycerin	2.6



WETTING AND FOAM PERFORMANCE

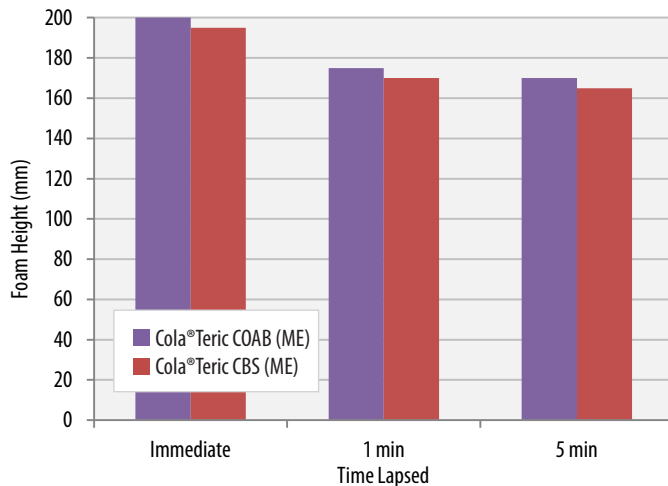
Draves Wetting, 1% active, sec	25.4		
Ross-Miles	Immediate	1 min	5 min
1% active, tap water	190	175	170
1%, 2% NaCl water	195	175	165

HYDROTROPE PERFORMANCE TEST



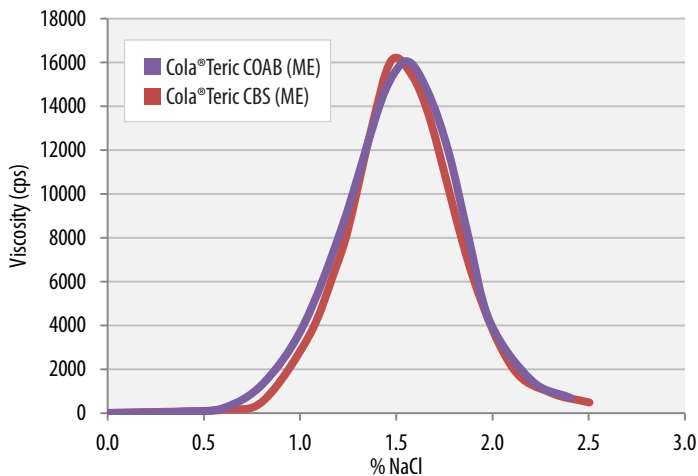
20% Active Cola®Teric Comparisons • Solution: 1% Surfonic L12-6 in 10% KOH

FOAM PERFORMANCE TEST



Test Solution: Water, SLS, SLES-2, Amphoteric
COAB (ME): 75/10/10/5; CBS (ME): 76.4/10/10/3.7

SALT PERFORMANCE TEST



Test Solution: Water, SLS, SLES-2, Amphoteric + Cola®Liquid DC (ME) (all) 1.5
COAB (ME): 75/10/10/5; CBS: 74.8/10/10/3.7

STORAGE / HANDLING

Cola®Teric CBS (ME) should be stored in closed containers. Frozen material may be thawed in a warm room, venting drums while warming. Shipped in poly drums (net weight 226.7 kg). Typical shelf life is 24 months from date of manufacture. Safety Data Sheets may be found at www.colonialchem.me.

